

THE CORVEDALE NEWS

SEPTEMBER 2023
The Corvedale's Community Magazine



Early morning mist above Aston Munslow - Gary Pitkin

COMMUNITY CONTACTS & SUPPORT



SOUTH SHROPSHIRE CITIZENS ADVICE

To access information and advice:

FREE Shropshire Adviceline:
(Monday - Friday, 10.00am - 4.00pm)
0808 278 7894

Specialist Debt Team:
(Monday - Friday, 10.00am - 4.00pm)
01742 280 019

**FREE Citizens Advice Consumer
Helpline:** 0808 223 1133

FREE Universal Credit: Help to claim:
0800 144 8 444

On the web
www.citizensadvice.org.uk

PHILIP DUNNE

**Member of Parliament
for the Ludlow Constituency**

54 Broad Street, Ludlow SY8 1GP

tel: 01584 872 187

fax: 01584 876 345

email: philip.dunne.mp@parliament.uk

54 Broad Street, Ludlow, SY8 1GP

SHROPSHIRE UNITARY COUNCILLOR FOR THE CORVEDALE

**Cllr. Cecilia Motley
Councillor, Corvedale Division**

Cabinet Member for Health and Communities;

Executive member, Rural Services Network;

Shropshire Council 01588 672 192



SHROPSHIRE COUNCIL SUPPORT AND RESOURCES

There is a wealth of information and resources available on the Shropshire Council website:

www.shropshire.gov.uk

From information about household recycling, planning applications, and highways to help with Cost-of-Living and Benefits. Help and information can also be obtained by phone: **0345 678 9000**.

CHURCH CONTACTS

CHURCH OF ENGLAND

Rev'd John S Beesley
St Michael's Rectory
Munslow
SY7 9EU
Tel: (01584) 841488
revjbeesley@gmail.com

CATHOLIC CHURCH

Canon Christopher Walsh
St Peter's RC Church
Henley Road, Ludlow
SY8 1QZ
Tel: (01584) 872906
st.peters.ludlow@talktalk.net

METHODIST CHAPEL

Craven Arms: for service times and ministers, please contact the Shropshire and Marches Circuit Office
Tel: (01743) 874923
circuitoffice2803@gmail.com

COPY FOR OCTOBER 2023 MAGAZINE

To make sure your contribution is included in the **October 2023** magazine, please send by email to editor@corvedalenews.co.uk by **MONDAY 18th SEPTEMBER 2023** at the latest.

ADVERTISEMENTS If you would like to advertise in the Corvedale News or amend an existing advertisement, please contact our Advertising Manager by **MONDAY 18TH SEPTEMBER 2023** at the latest for inclusion in the next issue: advertising@corvedalenews.co.uk. All adverts must be in electronic format and sent in either jpg or Word format.

PICTURES We are always very pleased to receive high quality pictures of scenes or events around the Corvedale to add to our library for use on the front cover. Email to photos@corvedalenews.co.uk.

EDITOR'S NOTE If anyone knows of other events taking place within their immediate area in the next few months, could they please let the Editor know so these may be included in the Dates for Your Diary.

OUR DOMESTICS

DON'T FORGET If you are aware of anyone who does not receive the Corvedale News in your area but would like to, please have a word with your distributor.

FINANCE If you have an outstanding subscription, please pass it to your distributor. If this is not possible, you can contact our Treasurer (giving your name and address): *Tony Bennett, Lower Middle Barn, Corfton, SY7 9LB.*

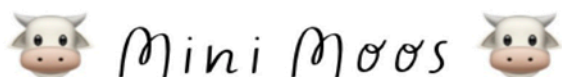
DISCLAIMER Views expressed in this paper are those of the relevant authors and not necessarily those of the Corvedale News team. We reserve the right to edit or omit any material submitted for publication. No liability is accepted for loss or damage arising from any omission of copy or advertising, and the appearance of advertisement does not imply endorsement or recommendation. The Corvedale News is published and distributed entirely by volunteers, with production costs defrayed by advertising and subscriptions.

DESIGN & PRINTING Our magazine is designed, set and printed by Craven Design and Print. info@cravendesignandprint.co.uk Unit 1, Craven Arms Business Park, Craven Arms, SY7 8NR. Tel: 01588 673972

LIST OF DISTRIBUTORS & AREAS

NAME	ADDRESS	AREA SERVED
Mrs P Baynham	Garage Cottage, Westhope	Westhope
Mrs B Bowers	Hungerford	Broadstone, Rowe Lane, Hungerford
Mrs N Brentnall	Holdgate Pool Farm, Brookhampton	Brookhampton
Mrs M Buckingham	The Old Rectory, Abdon	Abdon
Mrs D Clinton	Sunnycroft, Peaton	Peaton, Peaton Strand
Mrs C Crowther	Corfton Lodge	Corfton, Pedlar's Rest
Mrs C Evans	Aston Munslow	Aston Munslow
Mr I Hankinson	Broncroft, Broncroft	Broncroft, Baucott, Balaam's Heath, Tugford
Mrs V Hardwick	Sparchford Cottage, Sparchford	Culmington 1
Mr D Hedgley / Mrs M Holt	Bouldon	Bouldon, Wynett's Bank
Mr M Jones	Yew Tree Cottage, Corfton Bache	Corfton/Corfton Bache
Vacant – New Volunteer Required		Culmington 2
Mrs S Morgan	1, The Moors, Diddlebury	Diddlebury 1
Ms C Morgan	Ludlow	Sutton
Mr N Kennedy	The Old Byre, Diddlebury	Diddlebury 2
Mrs A Donnelly	The Ashlings, Munslow	Munslow
Mr P Turner	16 Beambridge, Munslow	Beambridge/Millichope
Ms N Fuller	Mill House, Bache Mill	Bache Mill
Ms S Walters	Roseford, Bache Mill	Middlehope

WHAT'S ON IN THE DALE



Mini Moos

Baby and toddler group

Every Monday
10-12 term time

£2.50 per family

Baby area
Toddler area
Ride ons
Craft activities
Song time
And lots more

 Diddlebury Village Hall 

Find us on Facebook
Mini Moos baby and toddler group



Weekly Whist Drives



Every Monday

All ages and abilities welcome

Doors open 7pm
Start 7:15pm

£3 to include half time
refreshments

Westhope Village Hall
SY7 9JL



CORVEDALE BOOK GROUP

Corvedale Book Group welcomes new members! It costs less than £5 a month to cover room hire fees and Shropshire Library loan fees.

For the first six months of the year, we will be choosing books selected by group members. Then we will be discussing books selected from the annual library list.

Please contact cathburley@hotmail.com if you would like to join us.

**Second Thursday of the month
7.30pm - 9pm at Diddlebury Village Hall.**

Next Meeting: Thursday 14th September



CORVEDALE ARTISTS

meet every Tuesday
from 10.00 am until 1.00pm in
Beambridge Village Hall

Portrait Model and Still Life
provided at each session
with tuition, or bring your
own artwork

**£8.00 per
session**

A warm welcome awaits new
members of all abilities
so why not come along?

For further information
telephone 01299 832608

Corvedale Folk Club at The Seven Stars, Broadstone on Monday 25th September at 7.30pm

All are welcome to perform or listen to and enjoy acoustic music, recitations and story-telling.

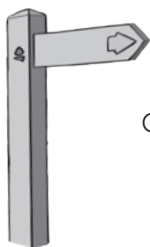
Meetings will be the 4th Monday of each month

For further information contact Ian on 01584 841 331 or email ianfotheringham@btinternet.com

CORVEDALE FOOTPATH MAINTENANCE GROUP

Working parties are usually on the 4th Wednesday of the month and the following Friday and Sunday, beginning at 9.30am. Please ring Jenny Vine on 01584 841596 to confirm work location. If any local walkers in the Corvedale notice any stiles or steps in poor condition, please report back to Jenny.

The current planned dates are as follows:
SEPT: Wed 20th, Fri 22nd, Sun 24th



Enjoy singing?
Corvedale Choir



is looking for new members who love to sing

WHO? We are a mixed voice choir based in the Corvedale who began singing together in 2010. Our Musical Director is Ros Crouch, well known for her leadership of several choirs in the area

WHAT? We sing an eclectic mix of harmony songs with a supportive, friendly and fun group of local people

WHERE? Diddlebury Village Hall

WHY? Because we love singing with other people and because singing is good for physical and mental health

WHEN? Monday evenings from 7.30pm to 9.30pm during term time.

We have 2 concerts a year: a charity fundraiser in the summer and a carol concert at Christmas



Interested? We would love to hear from you. There are no auditions, all songs are taught - an ability to follow music and a desire to sing is all that's required

Not sure if it's for you? You're welcome to come along and join us for a taster evening for free any Monday evening

Our new year begins on Monday 11 September

HOW? If you would like further information please contact :

Avril Lines avril.fossilsinshropshire@gmail.com or 01584 861 339

FLOWER FESTIVAL

at

**St Andrew's Church,
Ashford Bowdler, SY8 4DJ**

on

**Saturday 16th
& Sunday 17th September**

10am to 4pm

Saturday

Bacon/sausage baps ~ 11am – 12.30pm
Coffee, tea, cake ~ 2pm – 4pm

Sunday

Coffee, tea, cake
11am – 12.30pm & 2pm – 4pm
Raffle

All proceeds to St Andrew's Church

Arts@StLaurence 2023

Out of this World

Featuring *The Planets*
by Gustav Holst

Organ
Concert

Jonathan Scott

Bridgewater Hall

Saturday 2nd September at 7pm



Tickets £10: Ludlow Assembly Rooms or on Door



Corvedale & District AUTUMN SHOW

Saturday, 9th September 2pm-4pm



The show schedule can be downloaded at diddleburyparish.co.uk or email ross.stokes@icloud.co.uk

CORVEDALE GARDEN GROUP Saturday 11th November, 10.00am HOW TO PREPARE YOUR GARDEN FOR SPRING

Bring friends and family to Diddlebury Village Hall Autumn Talk, by Tamsin Westhorpe

Tamsin Westhorpe is a well-known and highly respected gardener from Stockton Bury Gardens. A RHS Flower Show judge, former editor of the Garden Magazine, lecturer and author. She is an enthusiastic and entertaining speaker.

£7 per person with refreshments.

**MARCHES
REAL
FOOD &
FARMING
CONFERENCE**

We'll be speaking!

**THE MARCHES REAL FOOD AND FARMING
CONFERENCE**

15th & 16th September @ Linley Farm, Shropshire

TICKETS ON SALE NOW!



RSPB Walks & Talks

More info can be found on the RSPB local group website.

WALKS

Sat 23rd Sept - Venus Pool

Sun 8th Oct - Bodenham Lake & Oak Tree Farm

TALKS – 7.30pm at Diddlebury Village Hall

12th Sept	Tom Wall	- Pond and River Birds
10th Oct	Alan Heath	- Shropshire Raptors
14th Nov	Terry Moore	- Wildlife Photography
12th Dec	Geoff Hall	- Shropshire and beyond



CULMINGTON VILLAGE HALL

ACTIVITIES & EVENTS - SEPTEMBER

Coffee Morning

Monday 4th and every following Monday, 10am - 11.30am
All welcome! Mug of tea or coffee for £1 with free refills plus a biscuit or two.

Bridge Club

Monday 4th and every following Monday, 12.30pm - 5pm
Contact Peter Whitehead pst.whitehead@gmail.com

Can Do Crafts

Saturday 9th
Includes refreshments. Contact Rosemary Jones 01584 861 823 or 07837 609 229

WI Talk, 7.30pm

Wednesday 13th, 10am to 12.30pm
A talk on Sign Language by Sally Joyner. Visitors welcome for £2. Contact Joy Williams on 01584 861 849.

Lunch Club

Thursday 14th, 12.30pm for 1pm
A delicious two-course meal for only £10 plus a raffle and a bar. Vegetarian option available. Book in advance with Gwyn Edwards on 07891 904 501 or 01584 861 666.

WI Ceilidh and BBQ

Saturday 23rd, 6.30pm
Enjoy an evening of food, drink, dance, and chat with the Ludlow North group of the WI. Non-members very welcome. Contact Val Hardwick on 07483 235 751.

Curry Night

Friday 29th, 6pm
Return of our popular curry night. Hot, mild, and vegetarian options available for £10.
Contact Gwyn Edwards on 07891 904 501 or 01584 861 666, or Anne Rowlands on 01584 861 787.

STANTON LACY VILLAGE HALL

EVENTS SEPTEMBER & OCTOBER 2023

Bar open every Wednesday at 8.00pm

Rugby World Cup

The hall will be open half an hour before the game starts.

Saturday 9th September	England v Argentina	8pm
Sunday 17th September	England v Japan	8pm
Saturday 23rd September	England v Chile	4.45 pm
Saturday 7th October	England v Samoa	4.45pm

DJ Nick Jones of Sunshine Radio

Saturday 2nd September, from 6.30pm.
Disco £5 & Billie's Chilli Shack.

Charity Ramble

Saturday 16th September - prompt 3pm start.
In aid of the Air Ambulance Service.

Community Market

Saturday 30th September
In aid of Severn Hospice and Myeloma UK

Stanton Lacy Parish Harvest Supper & Ceilidh

Saturday 7th October
All are welcome. For more details and to book contact Jennette Arnold on 07568 083 322

Halloween Fun with Undaunted

Saturday 28th October at 7.30pm

For more info.

Email: slvh.info@gmail.com
or Facebook: Stanton Lacy Village Hall Events

ABDON VILLAGE HALL

ACTIVITIES & EVENTS - SEPTEMBER

UFO (Un-Finished Objects) Craft Morning

The UFO craft group which meets on second Saturday of each month is taking a break but will be back on **Saturday 14th October 10.30am - 12.30pm** - more coffee, cake, and crafting... and of course chat! Bring along your projects to share ideas together.

Abdon Village Hall Bookings

Contact Margaret Buckingham: 01746 712 296 or abdon.villagehall@gmail.com
Or visit our website for the booking form and details: www.abdonandheathparish.org.uk

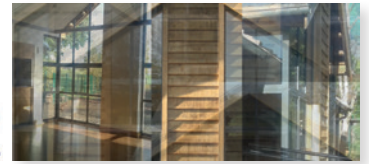
Coffee Morning

Saturday 30th, 10.30am to 12.30pm.
The coffee morning will take place, as usual, in village hall on the last Saturday in September. Everyone welcome for coffee, cake and chat!

DIDDLEBURY VILLAGE HALL

www.diddleburyvillagehall.org

Facebook: @diddleburyvillagehall



Corvedale Festival

3 pm Sunday
17th September

Stream of Sound Youth Choir

St Peter's Church,
followed by
Afternoon Tea in the Village Hall

7.30 pm Wednesday
20th September

Consort de Dance
Baroque

Diddlebury Village Hall

Barbie

Barbie (12A)
Ryan Gosling, Margot Robbie

7.45 pm Thursday 21st September
Doors & Bar Open: 7.15 pm
Tickets: £5 (Card machine)

Harvest Supper

Save the date!
Saturday 27th October

**Corvedale & District
Autumn Show**

Saturday 9th September

Mini Moos

Baby and toddler group

Every Monday
10-12 term time
£2.50 per family

	<p>Mini Moos Baby & Toddler Group Baby area, toddlers area, ride ons, craft activities, song time and lots more. £2.50 per family See Facebook for more information.</p>	<p>Mondays 10.00 - 12.00 Term time from 11th September</p>
	<p>RSPB South Shropshire local Group Meetings usually take the form of an illustrated talk, beginning at 7.30 p.m. and lasting until about 9.30 p.m. with a break at half-time. Admission: Local Group Members £2; visitors £5 including refreshments.</p>	<p>2nd Tuesday each month 19.30 from 12th September</p>
	<p>The Corvedale Choir is a mixed-voice community choir whose members enjoy singing a wide variety of music, whilst not taking themselves too seriously. Contact Ros Crouch: ros.crouch@gmail.com for more information.</p>	<p>Mondays 19.30-21.30 from 11th September</p>
	<p>The Blue Hills Choir meets weekly to sing classical music. All are welcome to join this friendly choir. Contact Ros Crouch: ros.crouch@gmail.com for more information.</p>	<p>Tuesdays 10.00-12.00 from 12th September</p>
	<p>The Corvedale Book Group enjoys lively discussions of the books obtained from the Shropshire Library Service. Contact Cath Burley: cathburley@hotmail.com</p>	<p>2nd Thursday each month 19.30</p>
	<p>Zumba is a Latin-inspired dance workout that is primarily an aerobic workout and it's all about having fun. Contact Cat: zumbawithcat@outlook.com/07817 448832</p>	<p>Tuesdays 18.00</p>
	<p>Tai Chi — benefits include improving balance, lowering blood pressure, feeling calm and energised, and improving core strength. Contact Enid Gill: enidgill21@hotmail.com</p>	<p>Thursdays 10.00-11.00 from 12th September</p>
	<p>Physiotherapist-Led Pilates. Contact Beverley Chumber: beverleychumber@sky.com 07967 814412</p>	<p>Fridays 09.15-10.15</p>

WESTHOPE VILLAGE HALL

Another phase of the refurbishment of the village hall has nearly been completed. A new kitchen with a new water heater has been installed and the ladies and gents toilets have been upgraded. We still need to paint and decorate the kitchen and toilets which is work-in-progress. We would like to say a huge thank you to all our working parties which have made this possible. They have worked tirelessly to prepare the hall ready for the tradesmen and for our skittles evening on 12th August. Many thanks to Mark for his hard work with his drill doing all the jobs that need doing to make such a difference. On behalf of the village hall committee we would like to thank all the suppliers and tradesmen who, at very short notice, had to complete the works to an extremely tight time scale. We now have to continue our fundraising for the next stage which is to decorate the outside of the village hall. Next year the hall will be 100 years-old and we plan to celebrate and have a party for the whole community, and those who have supported the hall throughout the years.

SEPTEMBER EVENTS

Whist Drives

Every Monday, now starting at 7.15pm.

£3 entry. All abilities welcome. Our numbers continue to grow so come along and enjoy a very light-hearted and sociable evening.

Yoga with Sue Pugh

Every Wednesday, 4.15 - 5.15pm.

There are a couple of spaces for the new term, starting Wednesday 6th September. Enquiries 07860 447 397.

Community Lunch

Thursday 7th September, 12.30 for 1.00 pm.

A delicious two-course meal followed by tea/coffee for only £10. Licensed bar and draw. All ages welcome.

Skittles Evening

Friday 8th September

Lots of fun. Licensed bar and refreshments.

Rummage Sale (& Nearly New Stall)

Saturday 16th September, 10am - 12noon.

Ladies, gents, and children's wear, bric-a-brac, homewares, toys, books etc. come along and grab yourself a bargain. Admission £1 to include a cuppa. All donations welcomed and collection can be arranged.

Harvest Supper

14th October 14th 7.00 for 7.30pm.

£15 for a three-course meal with tea/coffee and entertainment. Children under 12 - £8.

Bingo

Please note we are moving away from the monthly Bingo. Our next Cash Bingo will be on **Saturday 28th October** doors open 7pm eyes down 7.30pm.

DATES FOR YOUR DIARY:

Our **AGM** will be held at the village hall **Tuesday 19th September** at 7pm. Please come along and bring your ideas for future events and activities. All ages welcome.

Christmas Prize Bingo - Saturday 9th December

Christmas Whist Drive - Monday 11th December

Unfortunately the Corvedale Tots group has decided to relocate and will no longer be at the hall. We wish them well. The hall is available to hire with a licensed bar and catering if required. All enquiries Betty 07860 447 397.

MUNSLOW VILLAGE HALL

BIG BREAKFAST!

This exciting event to be held on **Saturday 30th September** is to raise funds for Macmillan Cancer Support, and Munslow Village Hall.

The gentlemen of Munslow will be serving a simple home cooked breakfast plus tea, coffee, and toast, at the Village Hall on the above date between 9am and 11am. The cost of this lovely meal will be £7.50 per head, children under 12 eat free.

All the villages in the Corvedale are welcome. Please contact Mr Alan Golden on 07590 383 026 or at c.alan.golden@mac.com to book your breakfast as soon as you are able. We will need to have an idea of how many

people to cater for.

We hope this event will be as well supported as our coffee mornings, and our Coronation event, as we would like to be able to repeat it on future dates.

If you are not able to come, please bear in mind this is a charity fundraiser and if you would like to make a donation, please contact Alan on the above details.



Lesley Dobson

DATES FOR YOUR DIARY

REGULAR WEEKLY ACTIVITIES

Every Mon	Corvedale Choir	Diddlebury Village Hall	7.30pm
Every Mon	Coffee Morning	Culmington Village Hall	10am - 11.30am
Every Mon	Bridge Club	Culmington Village Hall	12.30pm - 5pm
Every Mon	Westhope Whist Drive	Westhope Village Hall	7.15pm
Every Mon	Mini Moos - Baby & Toddler Group	Diddlebury Village Hall	10am
Every Tues	Blue Hills Choir	Diddlebury Village Hall	10am
Every Tues	Corvedale Artists	Beambridge Club Room	10am
Every Tues	Zumba	Diddlebury Village Hall	6pm
Every Thur	Tai Chi	Diddlebury Village Hall	10am
Every Fri	Physiotherapist-Led Modified Pilates	Diddlebury Village Hall	9.15am

SEPTEMBER 2023

2nd	Sat	Out of this World, Organ Concert	St Laurence's Church, Ludlow	7pm
2nd	Sat	Disco & Chilli Shack	Stanton Lacy Village Hall	6.30pm
3rd	Sun	Service of Thanksgiving with Bishop Richard	Holdgate Church	10am
4th	Mon	Flood Action Group Multi-Agency Meeting	Church Room, Diddlebury	3.00pm
5th	Tue	Culmington Parish Council Meeting	Culmington Village Hall	7.30pm
7th	Thu	Community Lunch	Westhope Village Hall	12.30pm
7th	Thu	Clover Club	Westhope Village Hall	12.30pm
7th	Thu	Munslow Parish Council Meeting	Beambridge Village Hall	7.30pm
8th	Fri	Skittles Evening	Westhope Village Hall	
9th	Sat	Can Do Crafts	Culmington Village Hall	
9th	Sat	Corvedale & District Autumn Show	Diddlebury Village Hall	2pm-4pm
12th	Tue	RSPB Talk - Pond & River Birds, Tom Wall	Diddlebury Village Hall	7.30pm
13th	Wed	Diddlebury & Westhope WI Talk - Sign Language, Sally Joyner	Culmington Village Hall	10am-12.30pm
14th	Thu	Lunch Club	Culmington Village Hall	12.30pm
14th	Thu	Corvedale Book Group	Diddlebury Village Hall	7.30pm
14th	Thu	Hayton & District WI Meeting	Stanton Lacy Village Hall	7.30pm
15th	Fri	Marches Real Food & Farming Conference	Linley Farm	
16th	Sat	Marches Real Food & Farming Conference	Linley Farm	
16th	Sat	Garden Group Visit	Knighton	10am
16th	Sat	Flower Festival	St Andrews Church, Ashford Bowdler	10am-4pm
16th	Sat	Rummage Sale	Westhope Village Hall	10am-12noon
16th	Sat	Charity Ramble	Stanton Lacy Village Hall	3pm
17th	Sun	Flower Festival	St Andrews Church, Ashford Bowdler	10am-4pm
17th	Sun	Corvedale Festival - Stream of Sound Youth Choir	St Peter's Church, Diddlebury	3pm
19th	Tue	Stream Clearing	Diddlebury Village	5.30pm
20th	Wed	Footpath Maintenance Group	TBA	9.30am
20th	Wed	Consort de Dance Baroque	Diddlebury Village Hall	7.30pm
21st	Thu	Flicks in the Sticks - Barbie	Diddlebury Village Hall	7.15pm
22nd	Fri	Footpath Maintenance Group	TBA	9.30am
23rd	Sat	RSPB Walk	Venus Pool	
23rd	Sat	WI Ceilidh & BBQ	Culmington Village Hall	6.30pm
24th	Sun	Footpath Maintenance Group	TBA	9.30am
25th	Mon	Corvedale Folk Club	Seven Stars, Broadstone	7.30pm
27th	Wed	Diddlebury Parish Council Meeting	Westhope Village Hall	7.30pm
29th	Fri	Curry Night	Culmington Village Hall	6pm
30th	Sat	Coffee Morning	Abdon Village Hall	10.30am
30th	Sat	Big Breakfast	Munslow Village Hall	9am-11am
30th	Sat	Community Market	Stanton Lacy Village Hall	

ACTIVITIES & CLASSES:

Village Halls: Abdon - Page 7, Culmington - Page 7, Diddlebury - Page 8, Stanton Lacy - Page 7, Westhope - Page 9

The deadline for all submissions to the News is Monday 18th September

CHURCH NEWS

LETTER FROM THE RECTORY

Writing this on another wet and windy day in mid-August, it somehow seems difficult to believe that in a couple of weeks from now the schools will be returning after the summer break. Shortly after that we will come to the Corvedale Autumn Show and then the start of this year's Corvedale Festival. The show reminds us of the amount of skill and creativity – gardening, floral, cooking and more – which is to be found locally. The festival provides a fantastic opportunity for us to hear really top-quality music, live, in our churches. In an age when we can easily download recorded music (or listen to CDs, the radio, etc.) it is easy to access high quality music of all descriptions at the click of a button, but there is nothing quite like a performance given by skilled musicians who are actually there in front of us, creating music for us to enjoy in the moment.

As we look back, it is not all that long since live music was the only sort of music available – and the same could be said for other aspects of the performing arts and also of many crafts. Now, it is easy to access things online or to have them delivered to our doors in a day or two. Whilst this is great in many ways, I wonder if it also leads to us becoming a society with a higher proportion of people who look at / listen to things created by others and fewer who do the actual creating.

The Bible begins with an account of God creating the world and whilst we may not now see that account as a factually accurate description of how the universe was created, there are still many truths to be found within it. At the end of the creation we are told that God looked at what he had done, and he saw that it was good. It is perhaps particularly good in this place in which we live. Let us take time, when we can, to appreciate God's creation, to be creative ourselves and to enjoy the talents of others.

Rev'd John Beesley

HOLDGATE CHURCH



On **Sunday 3rd September** the Bishop of Hereford, the Right Reverend Richard Jackson, will be coming to Holdgate to preside over a service of Thanksgiving for the installation of our new lighting and heating system and also our new organ. The service will be at 10am on 3rd September. All will be most welcome.

We will be holding a joint harvest festival with Munslow on **Sunday 1st October** this year at Munslow. The service will be at 7.30pm and will be preceded by a harvest supper in the church to start at 6pm. We would be delighted for you to join us for the supper. Please could you let Barbara Bowers or Claire Brentnall (07838 361 196) know if you wish to eat so that we get the food calculations correct!

Claire Brentnall

FROM THE REGISTERS

Baptism

12th August	Mollie Grace Mann	Culmington
	Charlie Michael Mann	Culmington

Weddings

16th August	Emily Cockburn & Ben Philips	Diddlebury
-------------	------------------------------	------------

FLOWERS & BRASSES

September 2023

3rd	Janet Yapp	17th	Zena Morgan
10th	Zena Morgan	24th	Liz Jones

MUNSLOW CHURCH FÊTE

Thank you to everybody who supported the fête at Munslow on Saturday 19th August. Although it would have been nice to hold the fête outside, in the end the uncertain weather meant we opted to be inside the church. It was a really enjoyable afternoon and has made a total of £1,077 for church funds,

which is tremendous. Thank you to everyone who ran stalls, donated items, baked cakes, made tea, helped to set up and clear away or who came to spend money!

Rev'd John Beesley

SUBSCRIPTIONS 2023

Many of you have already paid your subscriptions for the 2023 Corvedale News, but there are still quite a few who have yet to pay. The subscription price for your Corvedale News is now **£8.00 per annum**.

Subscriptions for electronic copies remain unchanged at £5.00 per annum.

May we remind you that subscriptions are actually due annually in advance.

If you have not yet paid your subscription for 2022, please let your distributor have your outstanding money as soon as possible if you wish to continue receiving the Corvedale News.

Subscriptions can be paid online using the bank details below or cheques can be posted to the Treasurer: Tony Bennett, Lower Middle Barn, Corfton, SY7 9LB.

Account name: Corvedale News

Sort Code: 30-90-49

Account Number: 54132260

When paying your subscription in either of the above ways, please add in your name and your location (e.g., BENNETT, CORFTON) so that the Treasurer can identify the person sending in the money. This is vitally important.

The Corvedale News Team

WOMEN'S INSTITUTE

HAYTON & DISTRICT WI

With no meeting in August, we did have an outing organised by committee members to bring those members who were available to come together for a trip to Newton Court Farm, Newton, near Leominster. With its famous 'Honk for Cider' sign, this Herefordshire cider production farm not only produces a wide range of cider, perry, and apple juice, offering tasting tours and educational trips, but it also has a restaurant and café and holds many varied events. A team of our members went for a Cider tour to discover about orchards, cider apple and perry pear varieties, the organic status of Newton Court Farm's processes, picking and pressing, fermenting, bottling and, of course, some tasting - returning for a ploughman's lunch, the cost of which was included in the price. It was a rainy day, but we trust our attending members enjoyed the day together despite the weather.

Another event to look forward to is the **WI Open Day** being hosted by Shrewsbury Abbey on **Saturday 16th September**, from 10:00am to 4:00pm, where Shropshire WI branches will have the opportunity to showcase their unique activities, exhibiting their individual and/or co-operative skills in craft, cookery, and floral art.

In the meantime, at our next meeting on **Thursday 14th September** at 7:30pm, we look forward to welcoming Emma Spenser whose talk, entitled *The Women's Land Army*, will give us an insight into the history and experiences of the women during and following WWII from 1939 until 1950 who signed up and made a huge contribution towards the food production of this country.

Anyone living in our district, including new residents, who would be keen in joining an active, inclusive WI branch to meet new friends, share interests, come on organised outings and events and listen to the inspiring speakers we welcome each month, please come along on the second Thursday evening of the month for a 7:30pm start to check us out. Further information about the WI, including membership and our club in particular, is available from our President, Phyllis Steventon on 01584 823 436, or Club Secretary, Amanda Brooks at hayton.district.wi@gmail.com.

Louise Gough

DIDDLEBURY & WESTHOPE WI

On Wednesday 9th August members of Diddlebury & Westhope WI met in Culmington Village Hall, with friends from other WIs in the Dale, to celebrate our 100th birthday. It was truly an incredibly happy evening, with old friends meeting and chatting, enjoying looking through our scrapbooks - lovingly compiled over the years by Kath Woodhouse and a reminder of other happy times we've had together before appreciating a delicious supper. Mary Hall, our longest serving member, cut the cake and we raised our glasses in a toast to the past one hundred years and to the next one hundred, which we hope will be filled with the same mix of friendship, interest, and laughter as in the past.

Many things have changed since our WI was started but we hope we have remained faithful to the intentions of those founder members and will continue to meet together in

friendship, to hear interesting talks, learn new skills and make new friends while supporting each other.

Mary Holland



Diddlebury WI at 100

MUNSLOW WI

Summer garden party at Loraine's:

The sun came out
We gave a shout!
At last! we said
For we had a dread
Of soggy cakes
And even soggier bread.
But NO! It was fine
And we had a grand time.
Strawberries and cream
Went down like a dream.
Assorted cakes
And scones well baked.
Coffee and tea, we all agreed
That a good time was had by all.

Why not join us? We meet on the 2nd Wednesday of each month. At next month's meeting we are looking forward to welcoming Elan Valley Pipeline with poetry and songs. For more information call me on 01584 841 251.

Jenny Rose

THE GREAT STORM

I found the article on *The Great Storm* by Steve Wood very interesting. It rang bells for me as the same storm is mentioned in a book called *Ticklerton Tales* (A History of Eaton-Under-Heywood) by Alan Dakers. In part of his book Alan has written from the diaries of Mrs Lilian Hayward (nee Buddecomb) of Ticklerton Court. Lilian describes the same hail storm and how badly it had affected The Corvedale, breaking windows and killing livestock. She writes that it happened in about 1860 so she must have heard about it from another source as she wasn't born until 1878. Alan also states in his book that some of Lilian's notes and dates had been difficult to decipher.

Jenny Rose

DIDDLEBURY FLOOD ACTION GROUP (FAG)

It is now time to begin to think about winter and the increased risk of our homes being flooded.

There are several water level gauges on the Corvedale watercourses to monitor water levels upstream from properties. The gauges can be viewed by any interested party by logging in to the Teview site (see image below) with a login and password. If you would like details of how to do this, please contact me on my email address below. For example, on the B4368 road bridge there is a level gauge. At times of heavy rain this gauge can be monitored for rising levels. Two alarm levels have been set. After exceeding the first level the gauge updates continuously. The second level indicates a need to be vigilant for flooding. At this point an auto-messaging service will alert people. In Diddlebury, level two is set at 0.8m, and from experience, the critical level of 1.5 metres, is the point when historically the village has had flooding issues.

Over the coming winter this alarm level will be monitored as the new housing developments and landscaping in Bache Mill may cause the flows to alter.

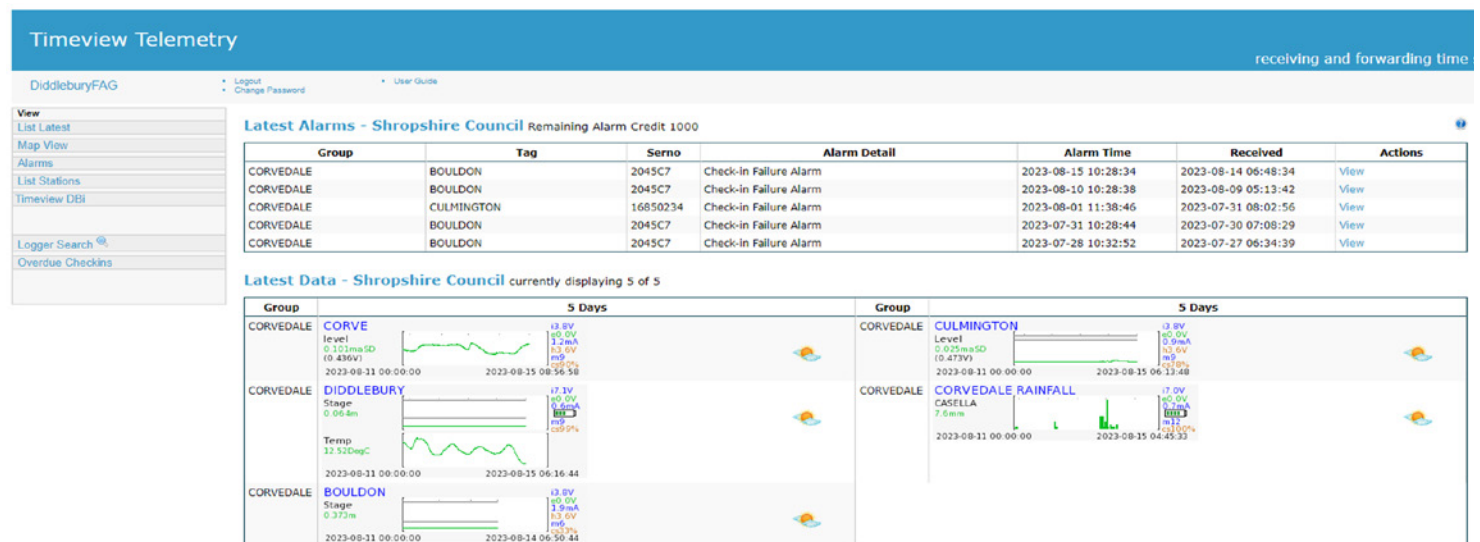
Some things which can be done to reduce water damage risks.

- Keep waterways clear of debris and seasonal growth.
- Check highways drains are free from debris, particularly leaves.
- Ensure your gutters and downpipes are clear.
- Be prepared with a list of important phone numbers.
- If the property has flood barriers, carry out a check, and clean the seals.

Autumn Stream Clearance - I am asking for volunteers to come and help clear the seasonal growth on the stream beside the weir in Diddlebury. Join us after 5.30pm on **Tuesday evening, 19th September**, weather permitting. Hopefully, many hands will complete the task by 7.00pm.

Lastly, the FAG has a meeting with the Council agencies on **4th September 2023**, at 3.00pm in the Church room. If interested, please come and join in.

Clive Martyn, Chair, Diddlebury Flood Action Group
happy4clive@gmail.com



PIZZA NIGHT AT DIDDLEBURY VILLAGE HALL



WOW!!! Our first ever event of this type at Diddlebury Village Hall attracted a fantastic number of people to enjoy our much-advertised Pizza Night. The sheer numbers of people attending - over 100 - surprised us all, resulting in a longer wait for our pizzas than we would have liked (lessons have been learned!) but the pizzas from Ferney Pizza were absolutely delicious!

We've had so many people contacting us to say what a great evening they had and it was heartwarming to see our community turn out in force to share a fun evening together. I think almost everyone ended up meeting someone new which is what these events are all about.

Huge thanks to all those who worked so hard helping on the night and also with setting up and decorating the hall beforehand. Your help was invaluable.

Thanks also to everyone for supporting us and we really look forward to seeing you all again soon.

Kim Simm

CORVEDALE GARDEN GROUP

Our August visit was to Kyre Park, Tenbury Wells, a Grade 2-listed house and landscaped garden, although the house is now in private hands and cannot be visited. It probably had a Saxon church, but the earliest remaining features of the house and church are Norman. There is a Norman dovecote with 550 nesting holes, now housing 'Captain Peacock and Mrs Slocombe' and their peacock chicks. The north wall of St Mary's church retains a Norman window and in the cellars at the western end of the house are the remains of the early Border Castle which was home to the Wyards and Mortimers who lived in the house until the 15th century. It was called 'Curia Wiardi' - Wiards Court - for a period. King Edward I granted rights to build a deer park in the 400 acre estate and to keep swans. The former is now harvested cornfields, but the latter still swim on the lakes.

By 1588 the house had been ruined by fire, Civil War and neglect and stood in ruins, before being rebuilt during the reign of Queen Elizabeth I. The huge tithe barn was completed in 1618. The great hall, its fireplace and two priest holes, and the gallery and bedrooms above it, were removed during renovations made in 1754. The stables were built at this period and the kitchen garden was enclosed by walls. There is an unusual covered walkway from the house to the church. The Baldwyn Childe Freeman family owned the property for many years, but the last son and heir was sadly killed at the battle of Loos in September 1915. So, the house which had been owned by one family until the 1930s has since passed through several hands. The house was later used as a convalescent hospital by the Red Cross during WWII, and later used by the then Spastic Society as a group home. Following this it was bought by a large family for multiple occupancy, then by a Mr Gwynne Jones in 2003 who spent £4 million on renovations but sadly died of Covid in 2020. A new owner has recently taken over.

Further details of the early years of the house and the inhabitants' connections across the Marches area can be seen

at: <https://archive.org/details/kyreparkcharters00amphoft>.

The original fishponds were extended in the redevelopment by Capability Brown, after he had redesigned Croome Park for the Earl of Coventry. It is believed the recommendation was made to Sir Edward Pytt and family by the Dowager Countess. The winding walks were laid out around the chain of lakes, ponds, cascades and waterfalls and the island with its pigeon house. The shrubbery and many specimen trees were added to the impressive tree specimens of earlier years. There is also a darkened grotto under the tower, through which you can walk, a folly and a thatched summer house as further viewpoints along the walk. The many superb trees include the largest girthed cut leafed beech in Britain, a huge 2,000-year-old parted yew, a Cedar of Lebanon, a medlar, gingko biloba, and a Liquidamber Styraciflua. The waterlilies and many wildflowers were in bloom. There was bird song from wrens, robins and spotted flycatchers too and butterflies were enjoying the buddleias. It is a peaceful place in which to wander or picnic and children would enjoy exploring there too.

Despite the forecast we were very lucky with our visit to Kyre Park: the rain held off until we had finished our coffee and cake after exploring the grounds. We were warmly greeted by Shiel who told us the history of the gardens and accompanied us around the grounds. You can visit daily paying £3.50 into an honesty box and buying drinks and cakes later from Olivia at the horse box on the lower car park.

On **Saturday 16th September** we head to Knighton at 10.00am to visit John and Brenda Morgan who have a garden full of late summer flowers mostly grown from gathered seed and other methods of propagation. The 0.75-acre garden has deep borders of rudbeckias, alstroemeria and day lilies and the shady walks, under a series of arches, head to new delights. £6 per person includes refreshments.

Cath Burley, cathburley@hotmail.com

TRACTOR RUN

Culmington village Hall committee will be holding the Corvedale tractor and 4x4 road run on **Sunday 1st October** starting from Culmington by kind permission of Mr and Mrs John Turley. All profits raised will be shared equally between the MS Society UK and the village hall renovations. Below are the approximate timings that the lead vehicle will be travelling through the villages enroute. Hot food will be provided at the start and finish.

Seifton / Culmington	10.00am (start)
Onibury.....	10.30am
Ludlow Racecourse.....	10.40am
Stanton Lacy.....	10.45am
Stanton Lacy Village Hall.....	11.10am

(Halfway halt for 45 minutes to an hour (approx.)

Tea, coffee and biscuits will be provided by courtesy of the Stanton Lacy Village Hall committee.

Stoke St Milborough	12.25pm
Clee St Margaret.....	12.40pm
Abdon.....	1.10pm
Peaton	1.30pm
Diddlebury	1.40pm
Culmington	1.55pm (finish)

The police have been informed of the route and timings. There will be marshals on duty wearing high-vis vests.

For more information please contact:

Pat Caine	07966 387 815
Andrew Mear.....	07588 108 716
Lewis Weaver	07831 606 079

Patrick Caine



Natives: Race and Class in the Ruins of Empire was an addition to our planned programme for this year. It generated a huge amount of discussion. It was a thought-provoking and at times a challenging, uncomfortable read which encouraged us to think about the history of empire we had been taught earlier in our lives. Its author, Kingslee James McLean Daley, was born on 1 December 1983 in Crawley, West Sussex to a Scottish mother and Jamaican father. His parents separated before he was born, and he grew up with his mother in Kentish Town. She encouraged him to attend Pan-African School, learn about Black history and to meet radical Black thinkers. This enabled him to develop an intellectual curiosity and sense of self-worth at an early age. Nevertheless, he had a difficult time in mainstream schooling where he was put in a special needs unit for pupils with learning difficulties at the age of six. Some of his teachers were prejudiced and their expectation of him and his peers meant their abilities were not recognised. Subsequent research has shown that unconscious bias can limit the educational attainment of different groups of the population. The community in which he lived was violent at times; he saw friends attacked and killed and he carried a knife as protection. He was stopped and challenged by the police at an early age and lived through the difficult days of the "sus" laws, enabling stop and search activities by the police. Once in secondary school he achieved 10 GCSE's, passing maths a year early and being in the top one per cent for English in the country. His height, speed and strength enabled him to focus on football as a teenager and he played for the schoolboy teams of West Ham United and AFC Wimbledon. From 2003 he started releasing music on his own label, Illa State Records. He has released three albums and two mixtapes. He has performed at festivals in the UK and across the world, including in Vietnam, Texas, and India. In a BBC Radio1 Extra live show he was challenged to write and perform a rap of 27 Shakespearean play titles in a minute. He is known today professionally as the rapper Akala, but is also known as a poet, author, journalist, and political activist. He is well known for Afrobeat, Rap and Hip-Hop. In 2006 he was voted Best Hip-Hop act at the MOBO awards and was on the 2021 Power-list of the one hundred most influential Black British People in Britain. He has lectured at many universities and has an honorary degree and doctorate from Brighton and Oxford Brookes Universities respectively. He works in primary, secondary schools and prisons to encourage young people to think differently about the world they live in. In 2009 he founded The Hip-Hop Shakespeare Company – a musical theatre production company which explores the

social, cultural, and linguistic parallels between modern day hip-hop artists and the works of William Shakespeare.

The book is both biographical and a historical/political polemic using a wealth of reference material to cite the inequalities of class and race in which he grew up and which influence our society and the world around us in both subtle and more obvious ways. It charts the challenges and the choices open, or not, to young people today from the poorer working classes, both black and white. This provides a context for the history of power and subordination by more affluent, educated and, in this case, white British upper-class men. The impact worldwide of centuries of oppression and imperialism on African communities has encouraged him to speak out for the liberation of all from oppression and exploitation. From the slave trade to 'Rhodes must fall' he explores histories of subjugation of one group of people by another, providing a breadth of context to broaden our thinking about the end of Empire. What or who is a minority group in a country/world made up of people from many places, countries, and continents, is a theme worth trying to understand. Akala continues by discussing the impact of Brexit on Europe today and the changing power balance from the white west to the increasingly powerful dragon nations of the Asian Pacific. He reminds us that as power balances change, so do the concepts of who is slave and who is master.

The knowledge of history we have has a Eurocentric bias and our experience of difference is seen from the perspective of a dominant white, male, economically powerful ruling class in the UK. A position which is changing, but not yet changed, to reflect the makeup of communities of people which demonstrate difference in many ways, far beyond skin colour.

'Natives' was densely written and you had to pay attention to every line, but none the less was very readable. The sentences were long and wordy, so challenging at times to follow Akala's knowledgeable, enthusiastic exhortations to try to see the world from someone else's point of view. Someone commented that 'it made me think about what I thought I knew in a different way. What they taught us was what they wanted us to believe.' So how and where do we find a broader picture of our nation and the world's history? It would be a good book to read several times.

On **Thursday 14th September** we will discuss ***Spill Simmer Falter Wither* by Sarah Baume**.

Cath Burley, cathburley@hotmail.com

TEAS, SCONES, CAKES & SCARECROWS!

Don't miss the Autumn Show. Gardeners, cooks, cake lovers and kindred spirits are reminded that the Corvedale Autumn Show will be held on **Saturday 9th September** at Diddlebury village hall, starting at 2pm.

So if you have been carefully tending your 'Spud in the Bucket' over the summer, the day of reckoning is fast approaching. But don't despair if you missed the boat and didn't order your seed spud back in May. There are plenty of other categories you can still enter, from flower arrangements and cookery to garden produce and crafts.

There's also a comprehensive children's section – and remember, there's still time to make a scarecrow to be in the running for a fabulous cash prize.

Teas and delicious cake will be available along with plenty of chat to make it a good afternoon out.

For full details of all the show categories, check out the show schedule online. www.diddleburyparish.co.uk/corvedale-and-district-autumn-show-2023

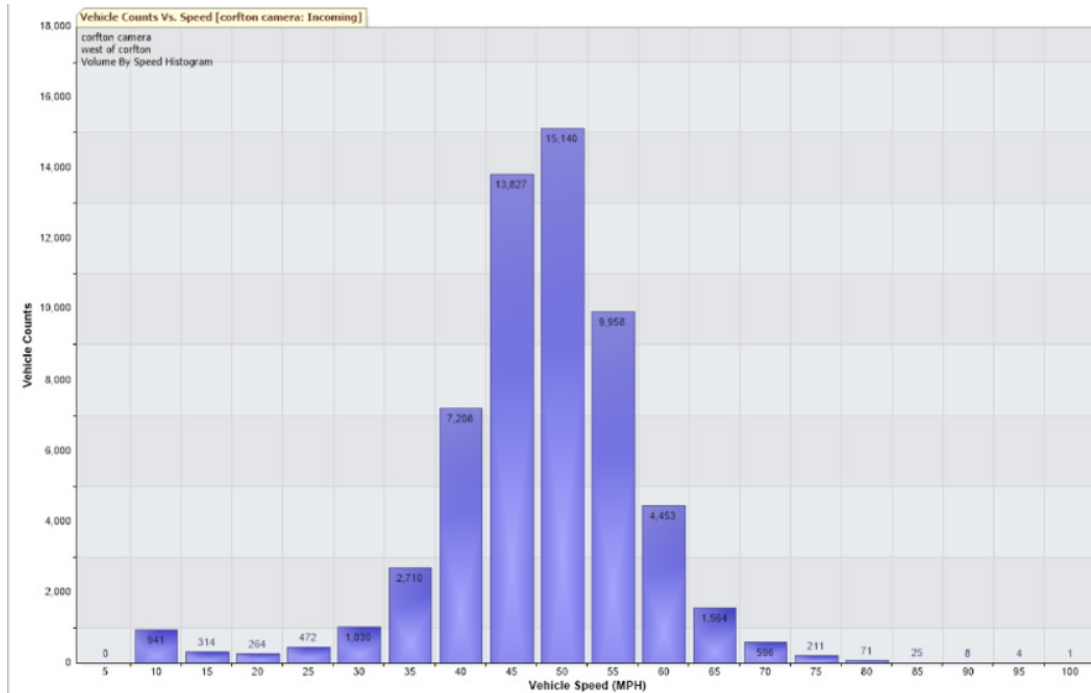
Copies can also be requested from ross.stokes@icloud.com

Ross Stokes

VEHICLE SPEEDS THROUGH DIDDLEBURY PARISH

Diddlebury Parish Council has recently obtained a second speed indicator device which can record the speed of vehicles passing it, within a 5-mph band. It does not record any other details of the passing vehicles.

From the initial download of data for the month of June, when the device was recording traffic approaching the Corfton crossroads from Craven Arms, the following statistics were obtained.



From a total of 58,797 vehicles.

The average speed of the traffic 45.3mph.

The highest speed recorded was 100-105mph on 29 June at 18:50pm

It is hoped that, going forward, data could be presented to Shropshire council highways department to reinforce the need to introduce more speed awareness measures on our roads.

Clive Martyn

NEIGHBOURHOOD CRIME FIGHTING TEAMS ARE KEEPING YOUR STREETS SAFE

Delivery on calls for a more visible and accessible police force, Police and Crime commissioner, John Campion has funded fifty-five officers to be recruited across five Neighbourhood Crime Fighting Teams (NCFTs) across the force area - with a sergeant leading a team of constables - in each of the Local Policing Areas (LPAs).

The NCFTs will be working hard to keep persistent offenders off the streets and reduce levels of high impact crimes such as anti-social behaviour, drugs, major thefts, and criminal damage.

South Worcestershire and Shropshire are both leading the way with the new teams in place now and already supporting the important work of our Safer Neighbourhood Teams (SNTs), Problem Solving Teams, Roads Policing, Proactive Teams and, of course, the wider force.



The teams for Herefordshire, North Worcestershire and Telford will be in place from September.

PCC John Campion said: 'I am delighted to see two new Neighbourhood Crime Fighting Teams already serving the communities of South Worcestershire and Shropshire, with

three more to follow in September covering the whole of West Mercia.

'Following my investment which has seen officer numbers reaching record levels in West Mercia, these first-of-a-kind teams in West Mercia will be fast-responsive units working in the heart of communities tackling the issues that matter to you.

'The teams are another example of my commitment to listen and deliver on your calls for more visible and accessible police officers, as I continue to ensure your police force has the resources and tools it needs to deliver a more secure West Mercia, as set out in my Safer West Mercia Plan.'

John Campion,
Police and Crime Commissioner, West Mercia

WESTHOPE CLOVER CLUB



Westhope Clover Club restarts their meetings on **Thursday 7th September** at Westhope Village Hall. Once again, we're joining the Community Lunch 12.30 for 1.00 o'clock. I will book you all in, just come and enjoy the dinner.

Kath Woodhouse, 01584 841 254

EXPERTS GATHER FOR FIRST MARCHES REAL FOOD AND FARMING CONFERENCE



15TH-16TH SEPTEMBER, BISHOP'S CASTLE, SHROPSHIRE

The first Marches Real Food and Farming Conference will be held at Partridge Farm, Bishop's Castle, Shropshire on 15th and 16th September.

Organised by The Shropshire Good Food Partnership, The Marches Real Food and Farming Conference will bring together local and national scientists, farmers, growers and chefs in a diverse and exciting programme focussed on creating a regenerative and future-proof food and farming system in the region and further afield.

The programme is wide-ranging with panels, talks and discussions featuring among others Chris Smaje (A Small Farm Future), Josiah Meldrum (Hodmedod's), Niels Corfield (soil health expert), 'Regen-Ben' (regenerative farmer) and chef Margot Henderson.

The conference includes a programme of practical sessions, from seed cleaning, biochar production and compost turning to microscopy. The event is also a chance to make local connections and build partnerships, as well as sample food and drink from local producers.

SGFP founder Jenny Rouquette comments: 'There will be opportunity for dialogue and debate, with thought leaders and people from the region involved in all aspects of the food system.'

'We'll be covering topics such as localising the food

economy, making regenerative agriculture pay and the crucial link between soil, plant and human health. It's a fantastic opportunity to learn, make connections and get involved in what is one of the most important challenges facing our communities and to be part of this exciting event.'

The Marches Real Food and Farming Conference has been inspired by the Oxford Real Farming Conference, now in its 15th year, as 'a movement dedicated to transforming food and farming systems'.

The SGFP was established to create a local food system to benefit people, place and planet and brings together representatives of all aspects of the food system, from growers to retailers, food banks, community organisations and councils.

The SGFP is part of the national Sustainable Food Places movement, which brings together pioneering food partnerships from across the UK, driving innovation and best practice on all aspects of a healthy and sustainable food system.

To see the full programme and list of speakers or to book tickets, visit www.mrffc.uk or contact hello@shropshiregoodfood.org or see the conference social media accounts on Facebook [@shropshiregoodfoodpartnership](https://www.facebook.com/shropshiregoodfoodpartnership) & Instagram [@shropshiregoodfood](https://www.instagram.com/shropshiregoodfood).

CARING FOR GOD'S ACRE



MICHAELMAS IS MORE THAN DAISIES

So here we are in September, nearly three quarters of the way through 2023. It's the month that is a bit like New Year! The summer is over, holidays are just memories, and everyone is back in school or work – but you don't have to make resolutions!

September is important in four areas of life: law, farming and academia, and the fourth one is religion: St Michael or Michaelmas. The feast day of Michael, Gabriel and Raphael, the three leading Archangels, is 29th September. In days gone by, saints' days and major church services were what marked out people's daily lives.

The law terms are the four times each year that our courts are sitting. The first, Hilary, runs from January to just before Easter (St Hilary's feast day is 13th January). Easter Term runs until just before Whitsun, while Trinity follows until the end of July, when courts have a longer break. In September, the last term of the year is Michaelmas, named for St Michael.

For tenant farmers the quarter days were important, too. They had to pay their rent to their landlords on these days. The last quarter day of the year is 29th September – Michaelmas again. After payment, the accounts for the year would be prepared for the Lord of the Manor by the bailiff or reeve.

In education, Oxford University (founded in 1096, soon after the Normans arrived) split the year into three terms: Michaelmas, Hilary and Trinity. When Cambridge was founded a century later it did the same, as did four Scottish ones. Manchester, London, Durham and Aberystwyth were not established till the 19th century, but they adopted the same traditionally named terms.

So what of St Michael himself? He is seen as the chief Archangel and the one who threw Lucifer (the Devil) out of heaven. The story goes like this: St Michael expelled the fallen angel and he fell from heaven and landed in a prickly blackberry bush. The Devil cursed the fruit, scorching them with his fiery breath, stamped on the berries, and then spat on them before urinating on them so they would be inedible.

You have until 11th October to collect your blackberries, this being the date of Michaelmas in the early Julian Calendar. The last pie you bake you can call a Michaelmas pie. After this date, the fruit starts to deteriorate, and all because St Michael threw the Devil out of heaven.

This should be a great year for the fruit after early sunshine followed by lots of rain. Add some apples and the perfect pie is created and you spite the Devil at the same time! Enjoy!

Anni Calver

CORVEDALE PAST & PRESENT

I'm just off shopping ...for some cow muck! Well of course I am, but it's going to be from cows that have spent all their lives on grass and treated organically.

Recently I have been looking at maps and images of the ground produced by high flying aeroplanes using laser scans – so called lidar images.

One wonderful indicator of use of the land over many centuries, so long in fact that it stretches back to the mediaeval times, is 'ridge and furrow.' On the face of it this is not terribly interesting: after all, these are just mounds of soil, with troughs in between. On the other hand it is a tangible reminder of how our ancestors lived. As Brian reminded me the other day an oxen plough team, getting towards the end of its furlong, would have to be encouraged to think about its next work which would be turning on the headland in front of it. So, it would start to deviate from the straight and narrow. As it did this at both ends of its furlong, the result would be a gentle S curve. This is what we did in England in some cases for a thousand years or longer. To me it's a breathtaking thought.

Ironically, the continuous cultivation of land without giving it adequate time to recover and regenerate its fertility can deplete the soil of obvious, and less obvious (but vital) nutrients, reduce its ability to retain moisture, and lead to erosion. Agricultural yields decrease, food becomes even shorter. Illness is also a factor resulting from the shredding of our usual immune responses.

Our ancestors learned over many generations to prevent this danger by the use of the fallow system, where fields were left out of production by rotation. This was fine but at times of war, or political or population pressure it's likely the system broke down.

There are examples all over the world of where once thriving agriculturally supported civilizations are now just desert places. A good example is the Samarian civilisation of Mesopotamia in present day southern Iraq. In our own history we might look suspiciously at the rising population that must have stressed the ridge and furrow system. I wonder whether that contributed to the horrors of the 1300s in this country and Europe.

In our own day we are facing a new crisis, and this has been brewing for a long time. In 1939, the year the Second World War broke out in Europe, around thirty doctors met in Crewe to discuss what they regarded as the lamentable and worsening health of our nation. They were addressed by two eminent doctors who had worked in India and noticed that the health of the local population who ate whole, unprocessed, food was a lot better than the Europeans

who were eating a posh and refined diet and using farming chemicals on their tea plantations.

The conclusion of the doctors at Crewe was that the nation's farmers should go back to traditional methods, forswearing artificial chemicals on their land in order to improve the nation's health. They were not listened to, and the war and subsequent food shortages made any change back to the older methods seemingly impossible: indeed, modernisation was accelerated.

In the 1960s and 1970s food started to be broken down and industrially mixed with vast numbers of other ingredients which were not natural to the human body. In a few years we turned our backs on the countless ages of food instinct honed through the '....slow burning fires of evolution.' The result is what today people call ultra-processed food, and you could think of this as industrial 'foodoid' (I apologise if this language seems immoderate: we are where we are, but we need to know where that is). One of the disastrous things about eating too much of this unnatural stuff is that we become deprived of vital micro-nutrients, which are unusual elements that are needed in tiny proportions and in great diversity. These keep our very organs alive. We get these vital bits of our diet from whole foods grown in naturally healthy soil and from nowhere else.

Many now believe that there is a connection between these changes in food habits and the great rising tide of chronic diseases of many organs that the western world is now experiencing and increasingly is unable to cope with.

All this sounds like terrible news, but 'it ain't necessarily so'! There is now a vast body of intelligent opinion which believes that making changes could vastly benefit not only the human population but also wildlife, atmosphere, rivers and seas.

When you look at our countryside and start to analyse its history the impression is of constant and accelerating change. If we make radical change now there are immense possible benefits. We are being clearly warned that if we continue as we are doing the future is dire indeed!

Peter Cornah

01584 823 858, petercornah@gmail.com

PS1. '....slow burning etc.' I could not resist a quote from a book I am reading currently: 'What your food ate' by Montgomery and Bicklé. If you are interested in the issues raised this is a wonderful read.

PS2. the cow muck? That'll be next month if your long-suffering editor gives me space.

PHOTOGRAPHS WANTED

Don't forget that we still need photos for the cover page. Send us your photos, from landscapes to local goings-on. We're looking for pictures that capture the essence of living in the Corvedale and surrounding community. Please send all photos to:

photos@corvedalenews.co.uk

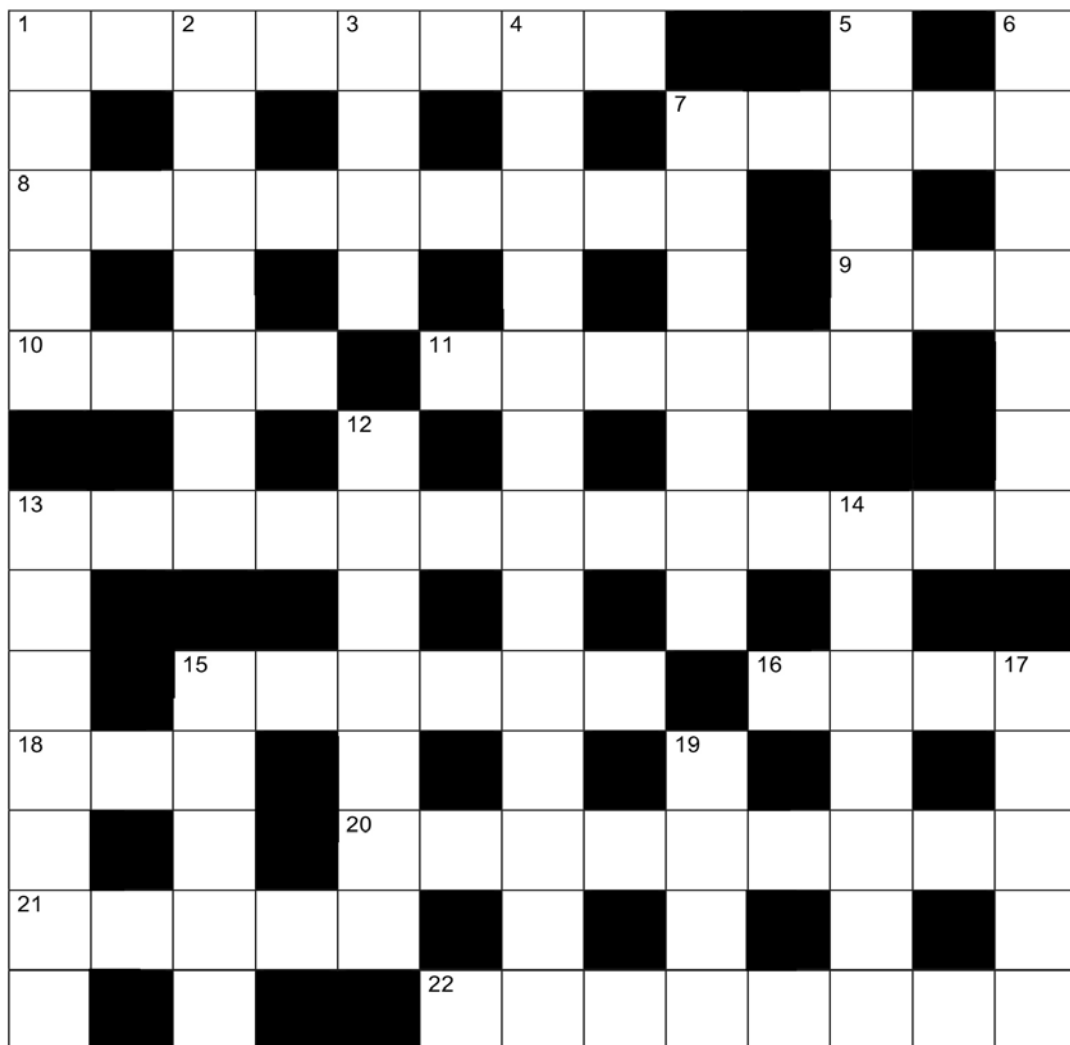
AUGUST CROSSWORD

BY ARTEMONAS

Answers to this month's crossword
can be found on page 31 in this
edition of the magazine.

ACROSS

- 1) Nude Rob's playing but comes back (8)
- 7) It's wonderful right in the account (5)
- 8) Be quiet and let 'er be more lightweight (9)
- 9) Pull back the inside (3)
- 10) Lose the leaves in the garden? (4)
- 11) Baffles bowlers' aim (6)
- 13) Way to open the door perhaps when sounding the alarm (4,3,6)
- 15) Greg's and Alan's footwear in there? (6)



- 16) See 4 down
- 18) Baby animal outfit? (3)
- 20) Determined to succeed even with extent of debts (9)
- 21) Encourages cleansing mainly (5)
- 22) Went to a race which had concluded (8)

DOWN

- 1) Reg skis around taking these? (5)
- 2) Part of the uniform for fires going well (7)
- 3) Fruit recorded as unattractive (4)
- 4,16 across)
Alice's journey looking for animals? (4,3,6,4)
- 5) Makes a noise on fingers (5)
- 6) Aunt or sister, maybe, loses head with happiness (7)

- 7) A broken fur limb? Right to the top (7)
- 12) Make Stan's end and beginning verses (7)
- 13) Baby animal has broken sack so goes home (5,2)
- 14) Go to do round about and find it's better than expected (3,4)
- 15) Animal direction in the theatre (5)
- 17) Mainly stopped and made more comfortable (5)
- 19) Animal dwelling's direction causes eye disease (4)

MUNSLOW PARISH COUNCIL

DRAFT MINUTES OF THE COUNCIL'S MEETING HELD ON THURSDAY 6TH JULY 2023

Present: Cllrs Barbara Archer (Chair), Nigel Dobson and Ed Povey.

In Attendance: H Coonick (Clerk).

Apologies for Absence: Cllrs Antonia Bury, Val Fotheringham, David Marston, Chris Meeson and Cllr Cecilia Motley (Shropshire Council).

Declarations of Interest: None.

Public Forum: No members of the public were in attendance.

Minutes of the Parish Council meeting held on 1st June were approved and signed by the Chair.

Urgent Items for discussion at the discretion of the Chair:

Two planters outside the Crown Inn had been demolished by a vehicle. This had been reported to the police. They would not be replaced as the verge will be seeded with wild flowers.

There was an issue with a footpath in Munslow which has been reported to Shropshire Council.

Caring for God's Acre are coming to the closed churchyard in Munslow on 13th September: all are welcome to come along to help.

Reports: Shropshire Council – Cllr Motley had sent apologies.

Beambridge Club Room – Cllr Dobson reported that the new lease had not yet been received from the Millichope Foundation.

South Shropshire Area Committee – Cllr Archer reported that the Boundaries Commission had proposed that Cardington Parish be added to the Corvedale division. Parishes are advised to keep checking for Ash Die Back and there is concern about losing agricultural land to solar panels.

Highways: VAS – as the Parish Council had already received a grant from the Police and Crime Commissioner in the previous financial year the PCC would hold the application till January 2024 to ensure that other parishes would have an opportunity to apply. In the meantime the Parish Council would purchase a mobile sign now using the budget set aside for traffic calming and reapply for the PCC grant in January 2024. The mobile VAS is now at Hungerford.

Environmental Maintenance: The Environmental Maintenance contractor would be asked to strim around the community car park at The Swan Inn and strim the verges on the lane to the west of The Swan in Aston Munslow.

Correspondence: Correspondence with the Police and Crime Commissioner re Town and Parish Survey 2023 would be deferred to the September meeting.

Councillor Vacancy via Co-option: Mr Andy Johnson was co-opted to the unfilled seat.

Repairs to the Community Car Park in Aston Munslow: The Clerk would report this through Fix My Street.

Updating the Parish Plan: The last plan had been completed over 10 years ago. Cllr Motley is requesting an update on what is expected in new plans, so this item was deferred to

the next meeting.

Items for Inclusion in the Place Plan: it was agreed to put forward the following: a. Recreational facilities for children/young people. b. Resurfacing of Aston Munslow Car Park with parking signs and markings. c. Protection of buildings on the Heritage At Risk Register (Broadstone Chapel) d. Sustainability - sustainable transport (car sharing, car club, electric Buzzard, electric charging point) e. Minimise flooding (local flood prevention activities) f. Speeding on B4368 (improve gateways) g. Maintenance of verges (safety and wildlife).

New Beambridge Club Room Lease: This had not been received, and was deferred to the next meeting.

Fundraising for the Henry Angell-James Memorial Trust: The Clerk would purchase four collection boxes and Cllr Dobson will liaise with Cllr Bury regarding fundraising at the next Millichope Park Open Garden event.

Defibrillator Training: This had been well attended and all were pleased with the standard of training. The Clerk had thanked the trainer and informed the Henry Angell-James Memorial Trust of the success of the event.

Methods of Communicating with Parishioners: A postcard would be sent to each household in the parish with details of how to join a communication method. This will be timed to coincide with communication about the Parish Plan. The cost of printing was authorised.

Access to Work for the Clerk: The clerk reported that she was having an Access to Work assessment for hearing equipment. There would be no cost to the Parish Council: another Parish Council was acting as the employer.

Insurance Requirements: The insurance is due for renewal on 4th September. It was agreed that the Clerk would purchase a new policy from that date using the criteria agreed by the meeting.

Accounts: As at 30th June the bank account (reconciled with the cash book) held £15,692.52. For the first quarter expenditure was £1,656.25 and income was £6,133.00. The only expenditure above budget was £102.00 on the Coronation. The report and the bank reconciliation were agreed and signed.

The following payments were approved: Village Hall Fee for 2022/2023 and 2023/2024 £300.00, D Lewis (Environmental Maintenance) invoices 329 and 346 £169.00, Insurance of up to £409.00 as per budget, H Coonick (Reimburse Clerk for inks, stationery and software) £69.23.

Items For The Next Meeting: a. Police and Crime Commissioner's Town and Parish Survey b. Updating the Parish Plan, c. Beambridge Clubroom Lease d. Fundraising for the Henry Angell-James Memorial Trust. e. Communications with Parishioners.

Next meeting: The next meeting will be on Thursday 7th September 2023 at Beambridge Village Hall, starting at 7.30pm.

Minutes and Agendas are available on www.munslowparishcouncil.co.uk or from the Clerk on munslowpc@gmail.com or 07817 607355

DIDDLEBURY PARISH COUNCIL

SUMMARY OF DRAFT MINUTES OF DIDDLEBURY PARISH COUNCIL'S MEETING ON WEDNESDAY 26TH JULY 2023 AT DIDDLEBURY VILLAGE HALL.

Present: Cllr D Hedgley (Chairman), Cllr A Watson, Cllr C Martyn, Cllr S Povall, Cllr A Rattu, Cllr T Pardoe.

Apologies: Cllr R Povall, Cllr T O'Boyle, Cllr R Morgan, Unitary Cllr C Motley.

In attendance: The Clerk and five members of the public.

Declarations of Interest: None were made.

Public Involvement Session: Mrs C Smout thanked the council for the notices recently displayed at The Moors/Moors View warning traffic of children playing. She asked if Shropshire Council could be asked to paint double yellow lines at the entrance to the Moors (from B4368) and at the junction where The Moors and Moor Views separate to deter parking, which inhibits sight lines. The council agreed to make the request but felt that enforcement may be an issue.

Approval of Minutes: The Minutes of the Parish Council meeting held on 28th June 2023 were approved and four matters arising were considered, including the current difficulties with mail deliveries. It was agreed that the council would write to the Sorting Office about the poor postal service.

Chairman's Report: The Chairman reported he and the Clerk had attended Cllr Motley's meeting at Culmington when, amongst other issues, the two current boundaries reviews were discussed. The meeting raised the various shortcomings in the forms produced by Shropshire Council for the parish Place Plan Review and asked if perhaps a template could be produced by SC which was both in line with SC's planning policies and identified exactly what information they were seeking from parishes. Cllr Motley agreed to take the matter up with Vicky Turner. They also discussed the non-delivery by the Traffic Engineer of the Traffic Survey on the Corvedale part of the B4368. Cllr Motley agreed to take the matter up with Highways.

Westhope Village Hall Report: Cllr Watson had resigned from the WVH Committee. The Clerk was instructed to write to the secretary (Mrs B Manley) concerning communications in the absence of a WVH Committee representative on DPC.

Flood Action Group: Cllr Martyn said a Flood Forum and a Multi-Agency meeting would take place in August and September respectively. He raised concerns about the flood risk posed in Bache Mill by the new housing development as the size of the stream is now more restricted than that set out in the original plans.

Planning Application 23/02497/FUL: Application for the erection of a pair of semi-detached three-bedroomed dwellings, instead of the previously approved single five-bedroomed dwelling (application 18/01465/FUL) plus associated works, at Aston Bank House, Bache Mill, SY7 9JX.

The Chairman outlined the history of this application. It was the view of the residents who attended the meeting and some who had placed comments on the portal that it had been the applicant's intention to build two houses, not one, all along and it was being dealt with in this way to avoid paying CIL and an affordable homes contribution. The indicators in the application suggested that council policies were adhered to and all views had been taken into account. The Chairman noted the concerns expressed by SUDS and the FAG about the proposed surface water attenuation scheme, which was deemed by them to be unsatisfactory. After considerable discussion, and having

taken all views into account, the council voted by a majority to support the application, subject to the SUDS's and FAG's concerns being addressed by a revised, acceptable, scheme.

Consideration of revisions for the Place Plan: DPC's Place Plan feeds into the Local Development Plan and will form part of the Craven Arms Area Plan. In this review DPC needed to identify what infrastructure projects it sought, how they would be funded, and whether planning or any other permission would be needed, amongst other issues. The Chairman proposed the following projects for the Place Plan Review:

- Improvements to the Broadband and mobile phone signal to outlying parts of this parish
- A children's playground for Diddlebury village
- Provision of public transport
- Measures to slow down the traffic travelling on the B4368

The Chairman and Cllr Rattu would draft and submit DPC's Place Plan Review.

Highways/Environmental Issues: Cllr Martyn had now set up the data capturing facility on DPC's Speed Indicator devices and would analyse the information gained from it.

Communications and Correspondence Received: Fourteen items were considered. The Chairman explained why planning application 23/02081/CPE had been refused.

Review of DPC's Website: Sara Thompson had been managing the DPC/Community website since 2016. She now felt, understandably, that a new volunteer should be appointed. The Chairman, on behalf of the council and the wider community, expressed his gratitude and thanked Sara for the sterling and dedicated work she has done for over seven years. Cllr Martyn volunteered to take over the management of the DPC website. For the time being it will continue to be run as a DPC/Community website, but this may be reviewed in due course.

Review of DPC's CIL/Neighbourhood Funds received from Shropshire Council: The Clerk had requested a schedule from SC detailing which developments had given rise to the CIL/Neighbourhood Funds paid to DPC. The schedule received appeared to be incomplete and some of the payments were illogical. She was seeking further information from SC so that she could progress the analysis.

Finance Report for July 2023: The Report was considered and cheques totalling £347.44 were approved for payment. DPC held a balance of £25,715.33 following payment of the approved cheques. Cllr Watson had checked and approved the reconciliation between HSBC bank statement 371 and DPC's Cash Book.

Any Other Business: Cllr S Povall said that due to the vast increase in the cost of electricity he is considering the possible erection of a 35 metre tall wind turbine at Corfton Farm, siting it near the chicken sheds, not on the skyline. He would be interested to receive local opinions on the proposal. Cllr Watson advised that, contrary to previous promises, the small gate onto the school yard was locked, preventing children from using the tarmac forecourt area. The Chairman agreed to investigate the matter.

The next Parish Council meeting is on 27th September 2023, 7.30pm at Westhope Village Hall.

Agendas and full copies of the Minutes can be viewed on the Diddlebury Parish Council website – www.diddleburyparish.co.uk, or obtained from the Clerk at No 12 Church Road, Brampton Bryan, Bucknell, SY7 0DH Tel: 01547 519282

CULMINGTON PARISH COUNCIL

DRAFT MINUTES OF THE MEETING HELD ON TUESDAY 4TH JULY 2023

Present: Councillors Mrs C Byng (Temporary Chair), Mr I Alderson, Mr M Seabrook, Mr I Steele, Mr J Turley (apologies given for late attendance) and Ms J Watts.

In Attendance: H Coonick (Clerk).

Cllr Carol Byng presided as chair of this meeting. Cllr Alderson was elected as the next chair.

Apologies for Absence: Cllrs Mr A Pike, Mrs M Holland, Ms J Mear and Cllr C Motley.

Declarations of Interest: Cllr Alderson and Cllr Watts re the planning items.

Public Involvement Session: No members of the public were present.

Minutes of the meeting held on 6th June 2023 were approved and signed by Cllr Byng.

Cllr J Turley joined the meeting.

Community Governance and Boundary Review: The Clerk reported that a joint letter from Culmington and Stanton Lacy Parish Councils had been sent to the residents of Vernolds Common in Stanton Lacy Parish to inform them of the options and invite them to attend either the next Culmington or Stanton Lacy Parish Council meetings to make comments.

Second Vehicle Activated Sign: The Police and Crime Commissioner has agreed the grant for a vehicle activated sign which has now been paid into the Parish Council bank account. The new sign will be purchased once the post has been erected.

There has been no update from Shropshire Council's Traffic Engineer on the position of the post for the Vehicle Activated Sign at the Eastern Entrance to Culmington Village.

Desilting Seifton Brook in Summer 2023: This was deferred to the next meeting.

Items to Include on the Place Plan: As no members of the public have attended to make proposals the items included in the last Place Plan and 2016 Parish Plan that are still relevant will be proposed, ie faster broadband for the whole parish, flood risk management infrastructure, rights of ways improvements (volunteers needed), traffic calming measures, to have a village pub, extension to the village hall, bus service, defibrillator in the Seifton area of the parish.

Renewal of the Parish Plan: This was deferred to the next meeting.

Police and Crime Commissioner Town and Parish Survey: There was concern that there had been no feedback from the Commissioner on the results of previous surveys. Cllr Byng will complete the survey.

Reports from Members: Shropshire Council – Cllr Motley was not in attendance,

Village Hall – Cllr Mear was not in attendance.

Flood Committee – Cllr Byng reported that there had not been a meeting.

South Shropshire Area Committee – Cllr Byng reported that she attended the meeting on 27th June. Cllr Cecilia Motley explained the Boundary Review in detail. Anyone who wants to comment on it must do so by the cut-off date of 10th July. The Community Governance Review is on hold until the Divisional matters have been resolved. Guidance re solar farms is to be published soon. They are awaiting the result of the Squirrel Lane enquiry. It was stressed that Community Benefit is not a Planning issue. The meeting asked that a copy of the guidance is forwarded to all Parish Councils when published. SALC will put their bulletins on their website as soon as they are published and anyone can access them. If any councillors or clerks have a problem they can contact SALC to ask for help/advice.

Planning: Cllrs Alderson and Watts left the meeting for these items.

23/02716/AGR Proposed agricultural fodder store, Burley Farm, SY7 9LW. Applicant: Alderson. For information only. Noted.

23/02516/FUL Holly Cottage, Culmington, SY8 2DF Erection of steel portal framed agricultural manure store Applicant: Mr Neil Sherry. The Council resolved to support the application.

Correspondence: Caring for God's Acre have asked for a grant. This will be added to the donations list for consideration at the end of the financial year.

A letter from Bruno Peak, Pageant Master, D-Day 80 will be forwarded to the Village Hall Committee.

Finance: As at 30th June the bank account stood at £13,732.55. Expenditure for the first quarter of the year amounted to £1,669.65 and income £8,289.08 (which included the grant from the Police and Crime Commissioner). Expenditure was within budget. The finance report and expenditure against budget were accepted and the bank reconciliation was signed.

Payments were authorised to: D Lewis (Environmental Maintenance) £140.25 for invoices 326 and 344, H Coonick (Reimbursement Stationery, 365 Microsoft, laptop battery) £47.22 and HMRC £23.20.

Items for the Parish Council Meeting at 7.30 pm on Tuesday 5th September 2023: a. Parish Plan b. Desilting Seifton Brook c. Clearing of footpaths and bridleways.

Cllr Watts reminded the meeting of the planned closure of Bishop's Castle Hospital. The Clerk apologised for not including the matter on the agenda for this meeting.

www.culmington.org Heather Coonick Clerk/RFO Telephone: 07817607355, culmingtonpc@gmail.com Hopton Gate Cottage, Haytons Bent, Ludlow SY8 2BE

ADVERTISER INDEX

CHIMNEY SWEEPS & FIREWOOD

Eaton Woodlands	27
JT Brisbane	27
Ludlow Firewood	27
Millichope Enterprises	27
Stanton Sweeps	27

GARDENING & TREE SERVICES

Arboretum Tree Services	24
Humble-Bee Gardeners, The	23
Shropshire Lawn Company	25

PROPERTY

DDA Architects	28
Just Mortgages	28
Samuel Wood	28

SCHOOLS & ACTIVITIES

Brockton Primary School	28
Corvedale Brownies	28
Corvedale Primary School	28

TRADES PEOPLE

AJ Hoskins & Sons Ltd	26
Ludlow Salvage	25
Gary Paris	26
Dave Stratton	26
Alan Williams	26
R.A.I.T. Electrical	26
Stephen Morgan	25

MISCELLANEOUS

Animal Behaviour Business, The	25
Bullseye Pest Control	25
Buzzard, The	30
Computer Medicine	23
Mike's Auto Care	29
Old Downton Lodge	24
Stonemasons of Church Stretton	29
SWS Broadband	23
Working Solutions	26



computermedicine

The computer people who come to you

Computer Problems?

- 1) Turn it off and on again
- 2) Call Computer Medicine
- 3) No more problems!

We are local computer experts who can help to solve your IT issues. Just some of our services include:

- Virus & spyware removal
- Supplying new PCs and all things tech
- Bombproof backup & cloud solutions
- Gearing your IT for home working
- Home & business support
- Staying safe online
- Remote support

We come to you so there's no need to take your PC to a repair centre.

NEW for 2022

We now also offer one-to-one training for those wanting to gain confidence using technology.

Please contact us to discuss your requirement - we can help.

Tel: 01584 856 774

info@computermedicine.co.uk

www.computermedicine.co.uk

Established in 2003



GARDEN TEAM

Garden Design - Plant Sourcing - Garden Management - Regular Maintenance
Seasonal Border Tidy - Green Roof Installation - Meadow Establishment
Specialist Pruning - Consultation

Email us: team@humblebeegardeners.co.uk

LANDSCAPE TEAM

Landscape Design - Soft & Hard Landscaping - Patios, Paving & Walling
Water & Stone Features - Bespoke Woodworking
Wooden Buildings & Structures - Pond Creation

Email us: build@humblebeegardeners.co.uk

Let us put the joy back into your garden!



Phone us: 01584 891463 / 07534 148428

www.humblebeegardeners.co.uk

[Facebook](https://www.facebook.com/humblebeegardeners) [Instagram](https://www.instagram.com/humblebeegardeners) @humblebeegardeners

The fastest broadband in the country(side) is coming

Speeds up to

900Mbps download 900Mbps upload

Prices from

£36

per month

Free Installation
with a 24 month contract

We provide ultrafast fibre broadband to rural communities, businesses and homes just like yours.

Call today on 0333 700 0227

Or email us enquiries@swsbroadband.net

SWS
BROADBAND Connecting rural communities since 2005

Terms and conditions apply. Subject to free survey. Prices include VAT and your prices are fixed for the duration of your contract. Non-standard installation may incur additional cost.



OLD DOWNTON LODGE

Restaurant with Rooms



Dinner Mon to Sun 18:00 till 20:30

Lunch bookings for 8 or more please call us with your enquiry

Afternoon Tea Mon – Sun 15:00 to 17:00

Booking Only Call 01568 - 771 826

Email: bookings@olddowntonlodge.com Web: www.olddowntonlodge.com

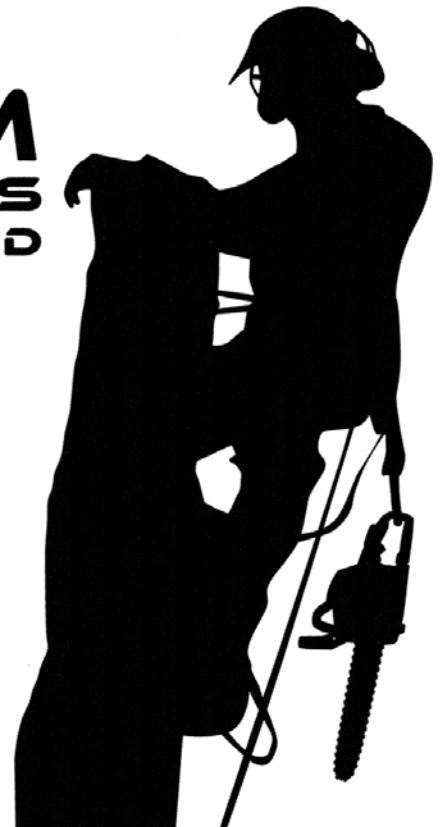
Old Downton Lodge, Downton on the Rock, SY8 2HU

ARBORETUM
TREE SERVICES LTD

TREE SURGERY SPECIALISTS
Domestic | Commercial | Utilities Contractors

Oli Francis

T: 01584 856 987 | M: 07890 395 120
E: oli@arboretumtreeservices.co.uk
W: www.arboretumtreeservices.co.uk



the shropshire lawn company

The affordable way to get a lovely lawn

- Seasonal treatments
- Moss control
- Scarification and aeration
- Lawn advice

Call for your free lawn analysis

01694 771452

07745 510482

www.shropshirelawncompany.co.uk



Stephen Morgan
Electrical Contractor

Tel: 07989 546964
Tel: 01584 322123
Email: business@smorgan.net

NICEIC
APPROVED
CONTRACTOR
(W.E. Morgan and Co)

Domestic - Agricultural - Commercial - PAT Testing
CCTV - Smart Home Networks - AV/Data Distribution



The local solution to your pest problems

Problem with **WASPS?**

Contact **Wayne Jones**

07779 461 397 or 01588 671 493

www.bullseyepestcontrol.co.uk

We also treat rats, mice, moles, flies, fleas,
and most other pests.

**LUDLOW
SALVAGE**

~ Est 2017 ~

Supplying reclaimed materials
for your homes and projects.

T 07805 312168

f /ludlowsalvage

Plot 1, Station Yard, Station Road,
Woofferton, Ludlow, Shropshire, SY8 4AW

www.ludlowsalvage.co.uk



The
**Animal Behaviour
Business**

*Solving Behaviour
Problems Positively*

- 🐾 Dog and Cat Behaviour Problem Resolution
- 🐾 'Grumps and Growlers' courses for dogs that bark and growl at other dogs and people
- 🐾 Puppy Classes (20 weeks and under)
- 🐾 Older puppy Classes (20 weeks to 18 months)
- 🐾 Recall Courses—Ensure your dog comes back - every time
- 🐾 Board and Train—Your dog comes to stay to be trained

07778 435116

valerie@animalbehaviourbusiness.com
www.animalbehaviourbusiness.com

R.A.I.T. ELECTRICAL

Rewires & new build
Alterations, Additions, Fault Finding
Inspection & Testing
Security Alarms, C.C.T.V.
Door Entry Systems

Tel Jason on:

01584 856 268 / 07740 356 578

E-mail: raitelectrical@btinternet.com

ALAN WILLIAMS

Interior & Exterior
Painter & Decorator



Mobile: 07951 578 923



A J Hoskins & Sons Ltd

We make and fit doors, windows, stairs but also fit standard kitchens, bedroom units etc.

Timber framing, fencing, decking, roofing, brickwork, plastering, painting and all types of property maintenance.

Carpentry, joinery and general builder.

Free Estimates - Local references available

NO VAT

Tel: 01584 890 298 Mob: 07977 844 863

Locally based PLUMBER & GENERAL MAINTENANCE

25+ years' experience

Saniflo Engineer

(separate rates apply)

No job too small

£25.00 first hour/part

£20.00 per hour thereafter

Can price by job if over 1 day

Call GARY PARIS

01584 861844

Dave Stratton

Carpenter Joiner

General Building Maintenance



Phone: 07803 083931

Email: Davestratton@btinternet.com

Corfton, Craven Arms, Shropshire



**WORKING
SOLUTIONS**
Recruitment Specialists

We recruit at all levels in all sectors for temporary and permanent vacancies in Shropshire, Herefordshire, Worcestershire and Powys.

Accounts - Administration - IT - Technical - Industrial

For vacancies and to register online:

www.workingsolutions.co.uk

54 Broad Street, Ludlow, SY8 1NH

Professional - Friendly - Local

admin@workingsolutions.co.uk

Call Guy, Rachel or Julia on 01584 877677 to register

Millichope Enterprises

Please call to order your
Log Deliveries

**Seasoned Hardwood Logs
Delivered to Your Door**

Estate Office 01584 841200

Email: estateoffice@millichope.co.uk

EATON WOODLANDS

Ring (01584) 861643

for your

SEASONED HARDWOOD

FIRE LOGS

Cut to your size

Ideal for Log Burners and Open Fires

JTB

J.T. Brisbane

SOLID FUEL INSTALLATIONS, SERVICE AND MAINTENANCE

- Installations of solid and multi fuel stoves and appliances, flexible metal flue and liners external and internal system chimneys/twin wall
- Chimney Sweeping
- Service and maintenance
- Remedial works and chimney repairs including chimney pot and cowl fitting
- Plastering and patios
- General building and property maintenance

Contact James on: 07855 717 902 / 01584 841 005

Brisbanej@hotmail.com

Meadow Cottage, Diddlebury, Nr Craven Arms



Chimney Sweep



**Local
and
Reliable
Service**

from £60 per sweep
Free Smoke Tests
Certificates issued

Contact: 07805 643422 or
www.StantonSweeps.com



**LUDLOW
FIREWOOD**

~ Est 2019 ~

Suppliers of Premium Grade Ready
to Burn Firewood, Beautifully Crated
and Delivered to Your Door



Please call: 07949 318014

/ludlowfirewood

Plot 1, Station Yard, Station Road,
Woofferton, Ludlow, Shropshire, SY8 4AW

www.ludlowfirewood.com



SAMUEL WOOD

We're ready when you are

Award-winning estate and lettings agents

Craven Arms 01588 672728
Ludlow 01584 875207
Lettings 01743 272720
Church Stretton 01694 722723
Shrewsbury 01743 272710

www.samuelwood.co.uk
cravenarms@samuelwood.co.uk

naea | propertymark

Corvedale C of E Primary School & Nursery
"Love God, Love Learning, Love Life"



Diddlebury SY7 9DH

Tel: 01584 841630

email: admin@corvedaleprimary.co.uk

www.corvedaleprimary.co.uk

Serving the Corvedale by providing an education of the highest quality rooted in Christian faith and practice, within a caring, stimulating and trusting environment.

Headteacher: Mr. J. Brough

School Administrators: Mrs. R Jarrett & Mrs. H Southall



Neil Anscomb-Gates
Mortgage & Protection Adviser

M 07932 813994

neil.anscombgates@justmortgages.co.uk



explore.
discover.
inspire.

"Pupils are enthusiastic learners. They work well together and help each other."

- OFSTED, June 2022

Places available, visits welcome

Nursery places for 2-4 year olds available now

Brockton, Much Wenlock, TF13 6JR

01746 785671

admin.brockton@taw.org.uk



The Friendly
Professional Service
For All Your Architectural Needs

David Dickinson

Dip Arch (Hons) DA (Manc) RIBA

Corffon Bache | Craven Arms
Ludlow | Shropshire | SY7 9LE

Office 01584 861 468

Mobile 07753 824 855

Email contact@dda-architects.co.uk

Web www.dda-architects.co.uk



Corvedale Brownies have joined Craven Arms Brownies and meet on one Saturday a month at the Discovery Centre, 10.30am until 1pm.

Please see:

www.girlguiding.org.uk/information-for-parents/register-your-daughter'



Lower Bank Farm,
Aston Munslow, SY7 9EP



DELIVERING QUALITY, ALWAYS

www.mikesautocare.co.uk
01584 817 094

Mike's Auto Care is a family business based in Aston Munslow, which offers full bespoke detailing services to suit all vehicles and budgets, and designed to help protect your vehicle against common cosmetic damage and problems that can build up over time. This will help get your vehicle back to near showroom quality. We offer a wide range of services ranging from a sympathetic hand wash, including dry, protect and shine, valeting services, to full bespoke detailing.

Mike has over **10 years** detailing experience and wants to make sure you drive away with a new-found love of your vehicle.

Buried in the beautiful Shropshire countryside, Mike's Auto Care is your first stop if you need a wash, valet or a detail.

Wheeluv Installation Accredited
Lanoguard Protective Lubricants Accredited
Matrix 4D Ceramic Coating Accredited.



STONEMASONS *of* CHURCH STRETTON

MEMORIALS

Headstones
Cremation tablets
Traditional and modern
Additional inscriptions

HOME

Kitchen worktops
Fireplaces and hearths
Bathroom and wet room
Signs and general masonry

01694 724 448 www.strettonstonemasons.co.uk

The Buzzard

Corvedale Community Minibus



A Friendly door to door accessible bus service for people living in the Corvedale

- * affordable
- * accessible
- * friendly, personal service
- * collecting from the Corvedale Villages and going to: Bridgnorth on Mondays
Craven Arms on Thursdays
Ludlow on Fridays
- * monthly trips to Shrewsbury



**Give us a ring today to find out more:
01584 700 907**

**Email: ludlowtraveller@shrewsburydialaride.org.uk
www.shrewsbury-dialaride.co.uk/corvedale-buzzard**

Shrewsbury Community Transport Initiative Ltd is registered in England & Wales No 3274618

CONTACTS FOR LOCAL SERVICES

LOCAL SERVICES & EMERGENCIES

Electricity Problems/Power Cuts
Western Power, 0800 6783 105

Water Supply Problems
Severn Trent Water, 0800 783 4444

County Flood Management
Shropshire Council, 0345 678 9006,
flood@shropshire.gov.uk

Diddlebury Parish Flood Action Group
Clive Martyn, 01584 841346,
happy4clive@gmail.com

Ludlow Minor Injuries Unit
Community Hospital, 01584 874297

Shropdoc (out of hours service)
Doctors Co-operative, 111

Station Drive Doctors' Surgery
01584 872461

Portcullis Doctors' Surgery
01584 872939

Craven Arms Medical Practice
01588 672309

Police (non-emergency)
PC 2693 Grant, 07773 054602,
stephen.grant@westmerci.pnn.
police.uk

Voluntary Car Scheme - 9am - noon
Craven Arms Good Neighbours,
01588 673732

CHILDREN'S & YOUTH ORGANISATIONS

Corvedale Brownies
www.girlguiding.org.uk/information-for-parents/register-your-daughter'

Corvedale School, Playgroup and Nursery
Jonathan Brough, 01584 841630,
admin@corvedaleprimary.co.uk

WOMEN'S INSTITUTES

Diddlebury & Westhope WI
Jane Cockburn, 01584 841483
pmc1989@btinternet.com

Munslow WI
Jenny Rose, 01584 841251,
gandjrose@mypostoffice.co.uk

PARISH CLERKS & WEBSITES

Abdon & Heath Parish Clerk
Wendy Richards, 07813 271274,
abdonandheathclerk1@outlook.com

Culmington Parish Council Clerk
Heather Coonick, 07817 607355,
culmingtonpc@googlemail.com

Diddlebury Parish Council Clerk
Mrs Jean de Rusett, 01547 519282,
diddleburypc@gmail.com

Munslow Parish Council Clerk
Heather Coonick, 07817 607355,
munslowpc@gmail.com

Diddlebury Parish Website
www.diddleburyparish.co.uk

Corvedale Google Group
This is a free service and issues purely local information such as road closures, flood warnings, planning applications, local events and so on to its members on a regular basis. If you would like to join this service, please email Martin Jones: martinggcn@gmail.com

VILLAGE HALL/CLUB ROOM BOOKINGS

Abdon Village Hall
Margaret Buckingham, 01746 712296,
www.abdonandheathparish.org,
abdon.villagehall@gmail.com

Beambridge Club Room
Frances Sutton, 01584 841654
Peter Turner, pturner767@msn.com

Culmington Village Hall
Jeff Williams, 01584 861849,
culmingtonhallbookings@gmail.com

Diddlebury Village Hall
Sally Woodhouse, 01584 841265,
sallyewhome@yahoo.co.uk,
www.diddleburyvillagehall.org

Diddlebury Church Room
Jan Kennedy, 01584 841372,
jan_kennedy@icloud.com

Westhope Village Hall
Betty Manley, 07860 447397,
mbm3049@icloud.com

CLUBS & SOCIETIES

Abdon Wildlife Group
Miles Leach, 07810 810400,
milesleach712@gmail.com

Blue Hills Choir
Ros Crouch, 01584 841053,
ros.crouch@gmail.com

Corvedale Artists
Juliet Hole, 01299 832603
Ann Hankinson, 01584 841460

Corvedale Book Group
Cath Burley,
cathburley@hotmail.com

Corvedale Choir
Ros Crouch, 01584 841053,
ros.crouch@gmail.com

Corvedale & District Autumn Show
John Woodhouse, 07980 207253

Corvedale Folk Club
Ian Fotheringham, 01584 841331

Corvedale Garden Group
Cath Burley,
cathburley@hotmail.com

Corvedale Footpath Maintenance Group
Jenny Vine, 01584 841596,
jvcedarwood@hotmail.co.uk

Community Environmental Group
Rebecca Bull,
peter17bull@btinternet.com

Diddlebury Dancing Group
Sally Woodhouse,
01584 841265, 07813 019010
sallyewhome@yahoo.co.uk

Westhope Clover Club
Kath Woodhouse, 01584 841254

If you represent a local Corvedale group and would like it to be added to this list, please contact the Editor.

ANSWERS TO CROSSWORD

ACROSS:

1) Rebounds; 7) Brill; 8) Shallower; 9) Gut; 10) Shed; 11) Stumps; 13) Push the button; 15) Sandal; 16) see 4 down; 18) Kit; 20) Ambitious; 21) Urges; 22) Attended

DOWN:

) Risks; 2) Blazers; 3) Ugli; 4) and 16 across) Down the rabbit hole; 5) Rings; 6) Elation; 7) Brimful; 12) Stanzas; 13) Packs up; 14) Too good; 15) Stage; 17) Eased; 19) Styte



THE CORVEDALE GROUP OF PARISHES

CHURCH SERVICES FOR SEPTEMBER 2023

	3RD SEPTEMBER Trinity 13	10TH SEPTEMBER Trinity 14	17TH SEPTEMBER Trinity 15	24TH SEPTEMBER Trinity 16
ABDON		9:45 HC		6pm EP
BROADSTONE			8:30 HC	
CULMINGTON	10am Group Service of Holy Communion		6pm Compline	8:30 HC (BCP)
DIDDLEBURY	at Holdgate	6pm EP	11:15 Corvedale Festival Service	11:15 FS
HOLDGATE	with Bishop Richard			
MUNSLOW		11:15 HC		9:45 HC
TUGFORD			9:45 HC	

Key: HC = Holy Communion, EP = Evensong, FS = Family Service